



Shakspeare Walk Stoke Newington, London N16

NEXT MOVE
PROPERTY AGENTS

Shakspeare Walk

Stoke Newington

London N16

Charming one bedroom flat in a superb sought-after location close to all amenities.



DESCRIPTION

Set on the first floor of an attractive four storey Victorian terraced house, the property boasts bright and well proportioned rooms with high ceilings and large sash windows. The accommodation comprises a generous living room; adjoining kitchen with wall and floor units, hob and oven, bathroom with shower over the bath; and beautiful spacious double bedroom. Shakspeare Walk is a popular tree-lined street just a short walk from the green open spaces of Clissold Park, and the eclectic array of independent shops, coffee bars and pubs on Stoke Newington Church Street and The High Street. There are excellent transport links to The City & West End with numerous good bus routes and trains to Liverpool Street from Stoke Newington Overground Station.

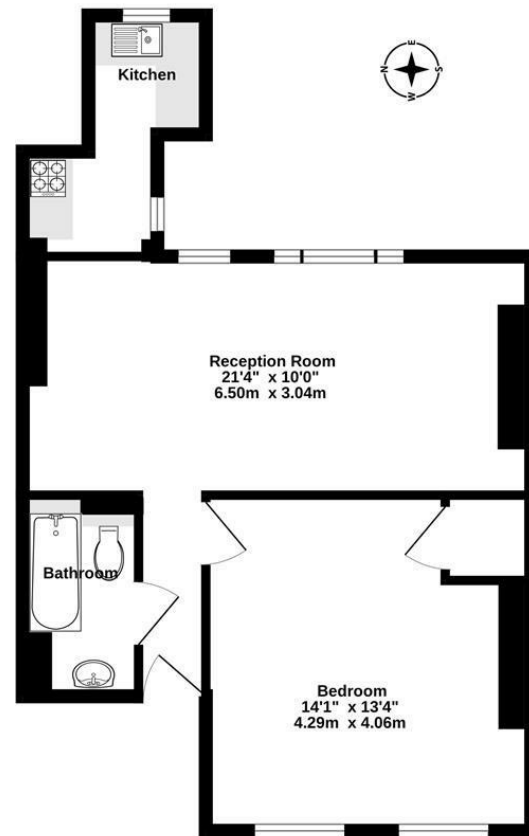


Share of Freehold

Asking Price £465,000

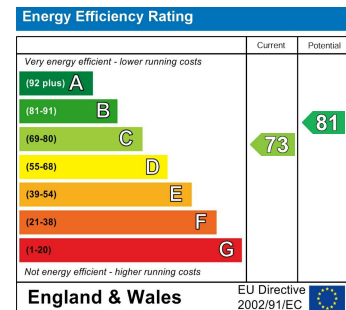


First Floor
505 sq.ft. (46.9 sq.m.) approx.



TOTAL FLOOR AREA: 505sq. ft. (46.9 sq.m.) approx.

Whilst every attempt has been made to ensure the accuracy of the floorplan contained here, measurements of doors, windows, rooms and any other items are approximate and no responsibility is taken for any error, omission or mis-statement. This plan is for illustrative purposes only and should be used as such by any prospective purchaser. The services, systems and appliances shown have not been tested and no guarantee as to their operability or efficiency can be given.
Made with Metropack 6/2020



NEXT MOVE
PROPERTY AGENTS

n16@nextmove.com
020 7254 9709
63-65 Stoke Newington Church Street,
London N16 0AR

nextmove.com